

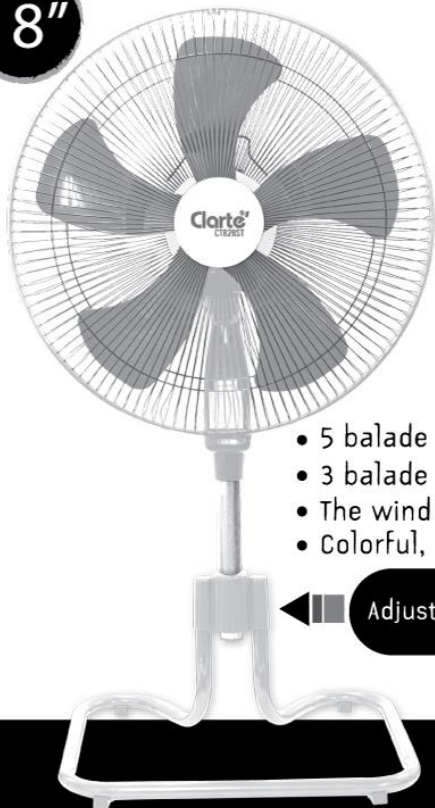
Clarte[®]

Home Comfort Center

INSTRUCTION MANUAL

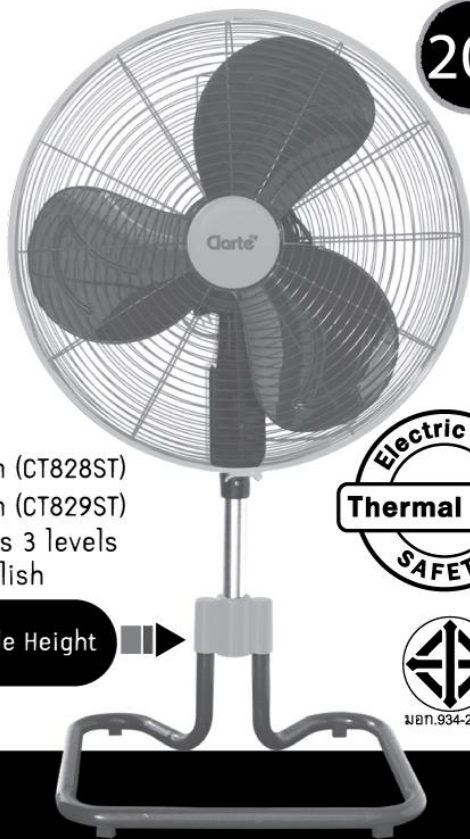
ELECTRIC FAN MODEL : CT828ST/CT829ST

18"



Model : CT828ST

20"



Model : CT829ST

- 5 balade Fan (CT828ST)
- 3 balade Fan (CT829ST)
- The wind has 3 levels
- Colorful, stylish

Adjustable Height



เลขที่. 934-2533

Please read these instructions carefully before using the unit.

SES

SMART ELECTRICAL SUPPLIES

52,54,56,58,60 Soi Phrayasuren 30 (Soi Saengsi), Phrayasuren Rd.,
Bangchan, Klongsamwa, Bangkok 10510, Thailand.

Tel. (66)2-919-2311, FAX. (66)2-919-2400, www.clartethailand.com

Thank you for purchasing “Clarte” electric fan

Before installing and using this electric fan, we suggest you read this instruction manual of use carefully and accept our proposal. It will help you to use this product in a more standardized and reasonable manner, thus making the electric fan work in an efficient way.

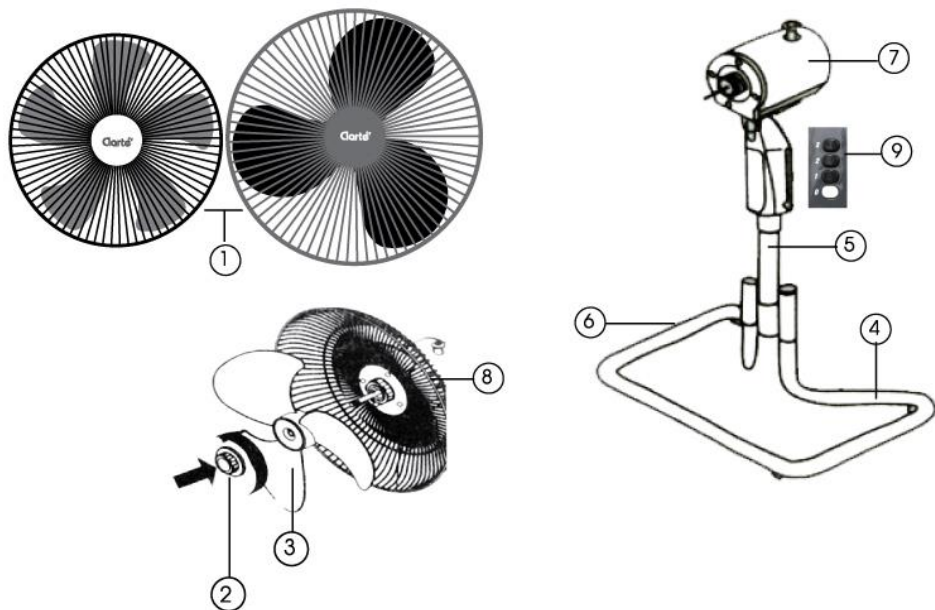
Call center : 662-919-2300

DIRECTORY

STRUCTURE.....	3
ASSEMBLE INSTRUCTION.....	4
CAUTIONS.....	5
MAINTENANCE.....	5
SPECIFICATION.....	5

SUGGESTION

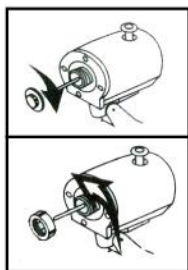
1. Should operate in a well-ventilated area.
2. Should not be used around fuel vapors and oil vapors, such as kitchen, gas station, etc.,
3. Company will not be responsible for damage caused by misuse or improper use of the electric fan.



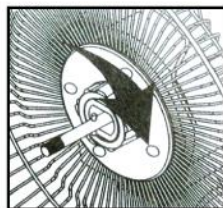
1. Front grille
2. Cap lock blade
3. 18" fan blades (CT828ST)
20" fan blades (CT829ST)
4. Fan stand
5. Body
6. Rubber support
7. Motor
9. Switch control

ASSEMBLY INSTRUCTION

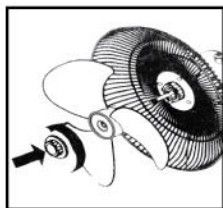
1. First, remove the Guard Lock Nut and Lock Cap from the axle on the motor head.



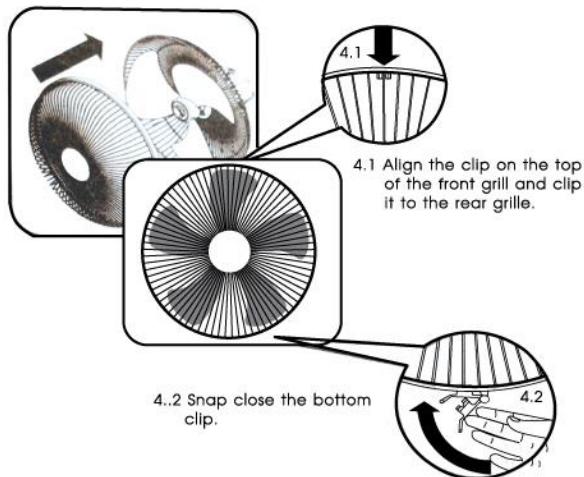
2. Place the Rear Grille on the axle and place the Guard Lock Nut and tighten by turning clockwise.



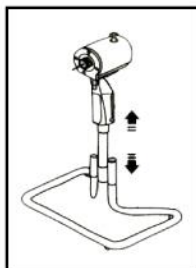
3. Insert the Fan Blade on the Axle then place the Lock Cap and tighten by turning clock-wise.



4. Install the Front Grille.



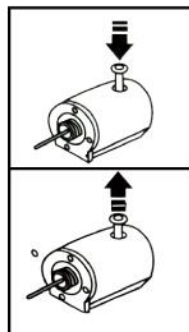
5. Adjust the height of the stand.



6. Place the Lock Cap when desired height is reached.



7. Fan Head Oscillation: Press down the Oscillation knob.
Fixed Direction: Pull the Oscillation knob up.



Press down

Pull up

8. Wind speeds switch control.



CAUTIONS

1. Do not push or insert any object through the grille while the fan is on. This may cause damage or danger.
2. Take care not to stain any plastic parts of the fan with oil. Please avoid using the fan at such place:
 - Kitchen : Oil is liable to the parts and damage deterioration cause by oil Sticking.
3. Children and patients should not be exposed to a operating fan for long period of time.
4. Always unplug the fan before removing grille.
5. If the supply cord is damaged, it must be replaced by the manufacturer or an authorized technician immediately.

MAINTENANCE

1. Turn off and unplug the fan before cleaning.
2. Remove the front and rear grille, fan blades and only use a soft, damp cloth to gently wipe the fan clean.
3. Do not immerse the fan in water and allow water to drip into the motor housing.
4. Do not use gasoline, thinner or other chemicals to clean the fan.

SPECIFICATIONS

	CT828ST	CT829ST
Voltage	220 V.	220 V.
Frequency	50 Hz.	50 Hz.
Power consumption	85 W.	140 W.
Electric current	0.40 Amp.	0.60 Amp.
Fan blades thickness	460 mm.	500 mm.
Net weight	4.88 kg.	5.90 kg.
Gross weight	6.08 Kg.	7.20 kg.
Product Size (W x D x Hmin-Hmax)	520x385x860-990 mm.	550x385x890-1040 mm.

SES

SMART ELECTRICAL SUPPLIES CO.,LTD.

SMART ELECTRICAL SUPPLIES CO.,LTD.

52,54,56,58,60 Soi Phrayasuren 30 (Soi Saengsri),
Phrayasuren RD., Bangchan, Klongsamwa, Bangkok 10510,

Thailand.Tel. 02-919-2311 Fax. 02-919-2400

SERVICE CENTERS 02-919-2300

www.clartethailand.com

facebook <http://www.facebook.com/clartethailand>



www.clartethailand.com

SMART ELECTRICAL SUPPLIES CO.,LTD.

52,54,56,58,60 Soi Phrayasuren 30 (Soi Saengsri), Phrayasuren RD., Bangchan, Klongsamwa, Bangkok 10510, Thailand. Tel. (66)2-919-2311 Fax. (66)2-919-2400

Bang Pa-In



Driving school

Nopparat Hospital

Fashion Island mall



Phrayasuren Soi 30



SMART ELECTRICAL SUPPLIES CO.,LTD.

Ramintra 109

Ramintra Road

makro

Bangna



Siam Park